

# Configuring Laserfiche® Web Products with IIS

*A Step-By-Step Guide*

September 2005

**Laserfiche®**

*The information contained in this document represents the current view of Compulink Management Center, Inc on the issues discussed as of the date of publication. Because Compulink must respond to changing market conditions, it should not be interpreted to be a commitment on the part of Compulink, and Compulink cannot guarantee the accuracy of any information presented after the date of publication.*

*This chapter is for informational purposes only. COMPULINK MAKES NO WARRANTIES, EXPRESS OR IMPLIED, AS TO THE INFORMATION IN THIS DOCUMENT.*

## Table of Contents

Configuring Laserfiche <sup>®</sup> Web Products with IIS.....	i
Table of Contents .....	2
Overview: Laserfiche and IIS.....	3
Anonymous Access.....	3
Windows Authentication .....	3
Windows Rights .....	4
Laserfiche Logon.....	4
Step by Step Instructions: Configuring Laserfiche Web Products.....	5
IIS 6.0 restrictions .....	9

## **Overview: Laserfiche and IIS**

Laserfiche web products use Microsoft's Internet Information Services (IIS) to communicate with users. To make sure that the Web Access or WebLink installation can communicate with the Laserfiche Server and with users connecting over a network, IIS needs to be appropriately configured. Most Laserfiche web products will try to do this when they are installed, but sometimes it may be necessary to configure IIS manually to cope with unusual situations or changes in the network setup.

The two possible configurations for IIS are Anonymous Access and Integrated Windows Authentication. Anonymous Access is the default, allowing users to access Laserfiche web products without entering their Windows credentials. Integrated Windows Authentication passes a user's own Windows account information through to Laserfiche, allowing them to use Windows authentication to log on to the Laserfiche repository.

### **Anonymous Access**

Anonymous access is the default configuration for both WebLink and Web Access. With Anonymous Access, IIS accesses network resources by impersonating a single generic user; it will access files and programs as though it were that user, with the same permissions and limitations. By default, with anonymous access enabled, IIS will run as whatever user you entered during installation. This user will need to have the appropriate permissions on the files that IIS accesses.

Different approaches can offer different benefits and drawbacks in terms of security and functionality. If you are concerned about the security of your server, visit Microsoft's TechNet at <http://technet.microsoft.com> for up-to-date information about IIS, and recommendations on how to make sure IIS remains secure.

### **Windows Authentication**

Integrated Windows Authentication for IIS allows Laserfiche users to log on to their Laserfiche accounts using Laserfiche Windows Authentication. With Anonymous Access, IIS always impersonates the same Windows user when accessing resources on the WebLink or Web Access server. With this configuration users generally must go through the login screen to log on to their Laserfiche accounts.

With Windows Authentication, IIS impersonates the specific user who is accessing the server. This allows users to access their Laserfiche accounts using Windows Authentication, bypassing the login screen. Integrated

Windows Authentication uses the Windows user information of the user accessing the WebLink or Web Access website from the client Windows machine, transmitting this information to the IIS server. The IIS server then uses these credentials to access Laserfiche.

## **Windows Rights**

In either case, whether IIS authenticates using anonymous access or Windows Authentication, the user account involved must have a certain minimum of Windows permissions on the WebLink and Web Access files. These permissions are as follows.

To access documents:

- Read and Execute
- List Folder Contents
- Read

To download/generate a PDF:

- Write

To delete a PDF that is being temporarily stored on the computer hosting WebLink:

- Modify

For WebLink, these permissions should be set on the Web Files folder in the install directory. For Web Access, set permissions on the ASPs folder.

## **Laserfiche Logon**

With Anonymous Access, the user account is used only to access the website files, not the actual Laserfiche documents. By default, when using Anonymous Access, WebLink and Web Access will ask the user to log on to the Laserfiche repository with their own Laserfiche account. However, you can also configure the administrator's utility to auto-logon with a generic Laserfiche account.

If you are using Windows authentication, WebLink and Web Access will automatically log on to the Laserfiche account associated with the Windows user accessing the repository. If the Windows account is not associated with a Laserfiche user, WebLink and Web Access will display the login screen as they would for Anonymous Access.

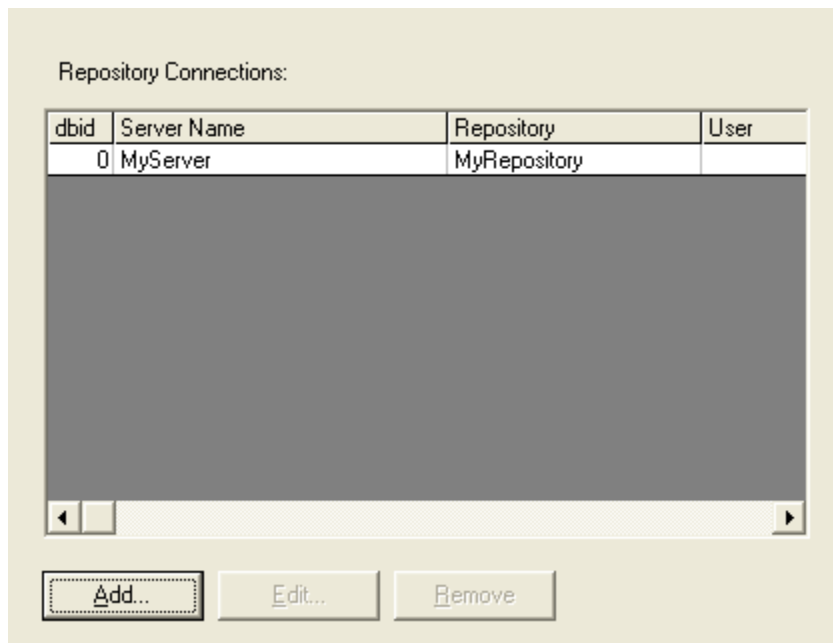
## Step by Step Instructions: Configuring Laserfiche Web Products

To load IIS:

1. On the server where WebLink or Web Access is installed, click Start and click Control Panel.
2. Double-click Administrative Tools.
3. Double-click Internet Information Services.

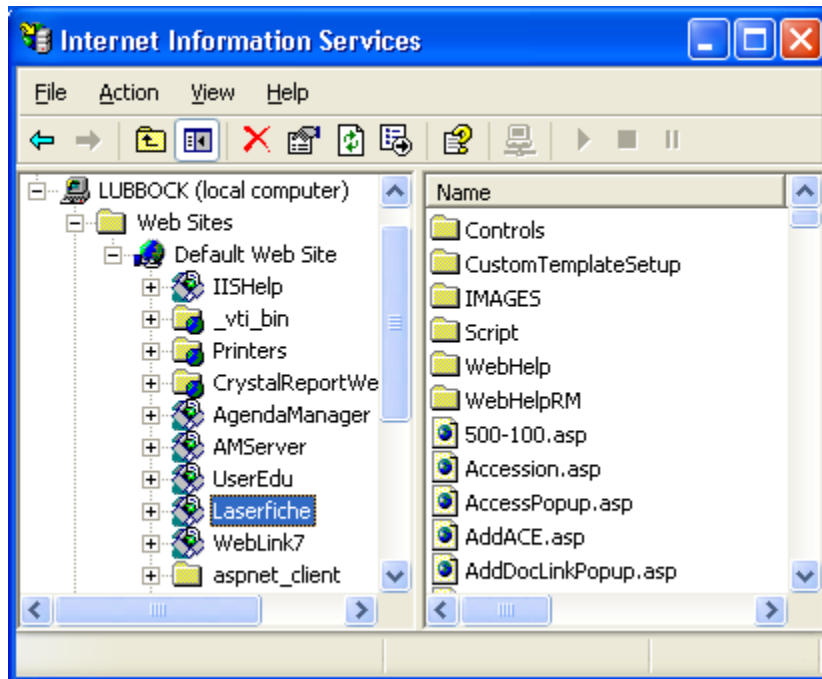
### Configuring Windows Authentication for WebLink and Web Access:

1. Add a repository connection entry in the Administrator's Utility. Enter the repository and server names, but be sure to leave the user name and password blank. In Web Access, the administrator's utility will then prompt you for a username and password to test the connection. Enter any valid username and password for this test; it will not affect your repository connection settings, and the user and password in the configuration will remain blank.



2. Click OK to exit the administrator's utility. This will ensure your changes are saved.
3. Load IIS.

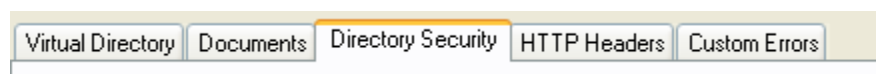
4. Click the WebLink7 virtual directory (for WebLink) or the Laserfiche virtual directory (for Web Access).



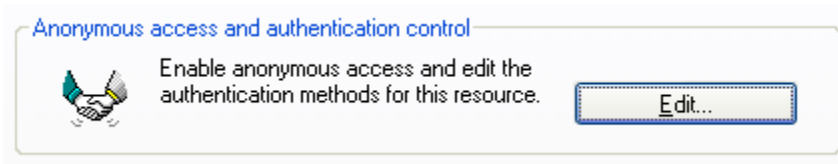
5. From the Action menu, click Properties.



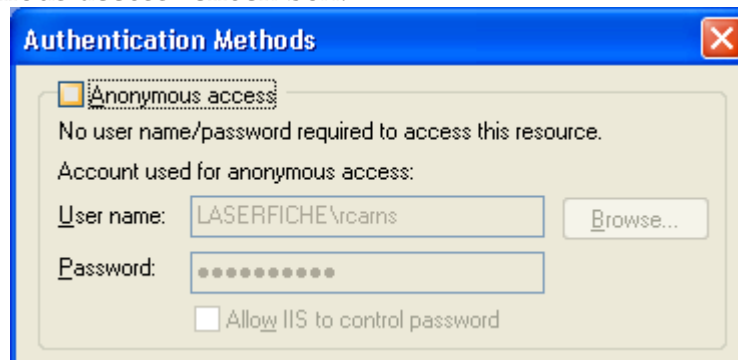
6. In the Properties dialog box, click the Directory Security tab.



7. Under Anonymous access and authentication control, click Edit.



8. The Authentication Methods window will appear. Clear the "Anonymous access" check box.



9. Select the "Integrated Windows Authentication" option.

---

**Note:** If you select this option without clearing the Anonymous Access check box, it will have no effect; IIS will still use Anonymous Access by default until the Anonymous Access check box is cleared.

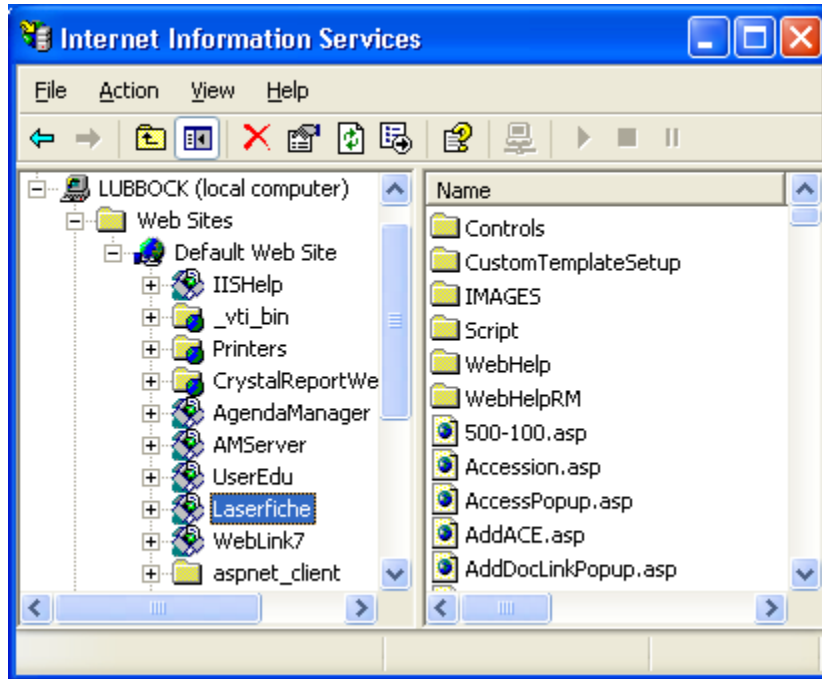
---



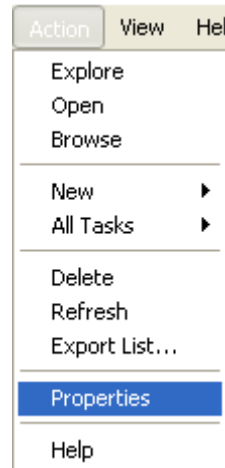
10. Click OK to save your changes and exit the Authentication Methods dialog box. Click OK again to save and exit the Properties dialog box.

### Configuring Anonymous Access for WebLink and Web Access:

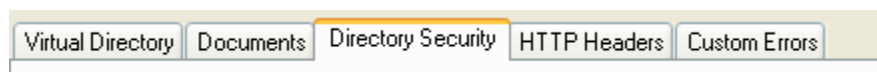
1. Load IIS.
2. Click the WebLink7 virtual directory (for WebLink) or the Laserfiche virtual directory (for Web Access).



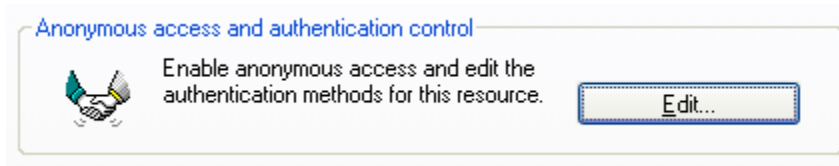
3. From the Action menu, click Properties.



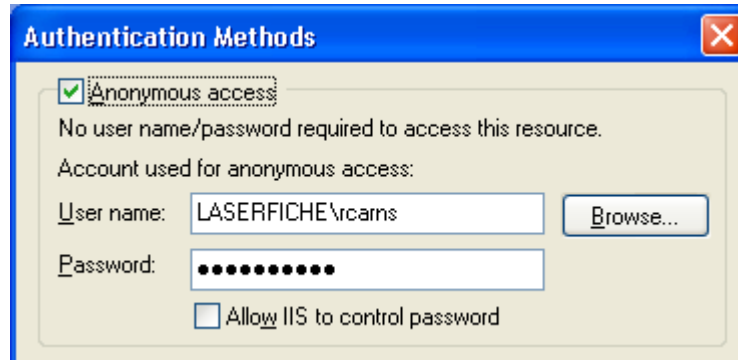
4. In the Properties dialog box, click the Directory Security tab.



5. Under Anonymous access and authentication control, click Edit.



6. Make sure the Anonymous access check box is selected.



7. Enter the username and password of the account you want to use for anonymous access. You should use a domain user (that is, a user name of the form DOMAIN\username.)
8. After making the changes, click OK and exit from the IIS properties dialog.

### IIS 6.0 restrictions

If you are using IIS 6.0, a few restrictions will be in place by default. You will need to enable ASP pages, and you may also wish to change the settings to enable uploading large files.

#### To determine what version of IIS you are using:

1. Load IIS.
2. Click Help and select About Internet Information Services.
3. A window indicating the IIS version will display.

#### To enable ASP content in IIS 6.0:

1. Load IIS.
2. Click Web Service Extensions. Active Server Pages will be listed underneath it as one of the extensions.
3. Select Active Server Pages, and then click the Allow button located to the left of the extensions list

### To upload large files in IIS 6.0:

1. Using a text editor, open the MetaBase.xml file located in C:\Windows\System32\Inetsrv.
2. Locate the line that looks like the following:

```
AspMaxRequestEntityAllowed=x
```

3. Replace the existing value of *x* with a desired value. This value should be the maximum file size in bytes (1 MB = 1 048 576 bytes). Set this value to be larger than the size of the largest files you will want to upload.



Configuring Laserfiche Web Products  
September 2005

Author: Regina Carns

Compulink Management Center, Inc.  
Global Headquarters  
3545 Long Beach Blvd.  
Long Beach, CA 90807  
U.S.A

Phone: +1.562.988.1688  
[www.laserfiche.com](http://www.laserfiche.com)

Laserfiche is a trademark of Compulink Management Center, Inc.  
Various product and service names references herein may be  
trademarks of Compulink Management Center, Inc. All other products  
and service names mentioned may be trademarks of their respective owners.

Copyright © 2005 Compulink Management Center, Inc.  
All rights reserved